

---

---

# BULLETIN

---

---

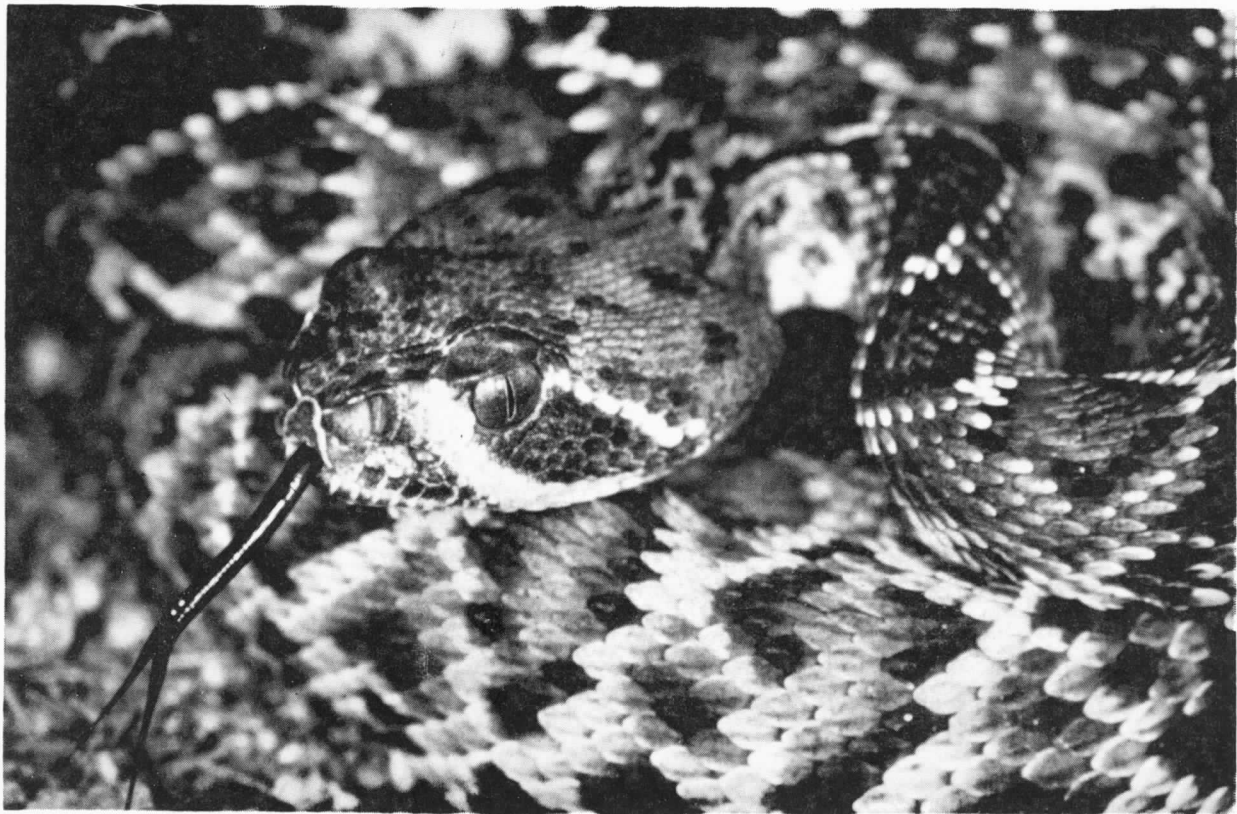
of the  
**Chicago Herpetological Society**

---

---



Volume 25, Number 3  
March, 1990



The status of amphibian and reptile populations in a region is something that regional herpetological societies can investigate. An article within provides an example of such a study and describes how societies can undertake such projects and the benefits such activities offer. Above is a red diamondback rattlesnake, *Crotalus ruber*, photographed in San Diego County, California by John C. Murphy

# BULLETIN OF THE CHICAGO HERPETOLOGICAL SOCIETY

Volume 25, Number 2

March, 1990

Three Anatomically Aberrant Albino <i>Crotalus atrox</i> Neonates . . . . .	John H. Muir	41
A Model for Regional Herpetological Society Field Studies: The Snakes of Southern California, a Proposal, and Some Thoughts on Collecting . . . . .	John C. Murphy	42
<i>Corucia zebrata</i> : Unconfirmed as Natural Prey of <i>Crocodylus porosus</i> . . . . .	Paul Gritis	46
Notes on the Behavior of the Oklahoma Salamander ( <i>Eurycea tynerensis</i> ) . . . . .	Renn Tumlison and George R. Cline	47
Amphibians and Reptiles of the Palos Preserves . . . . .	Kenneth S. Mierzwa	49
A Long Lived Record of an <i>Elaphe obsoleta obsoleta</i> . . . . .	Ernest A. Liner	50
HerPET-POURRI . . . . .	Ellin Beltz	51
Herpetology 1990 . . . . .		54
Advertisements . . . . .		55

## EDITORS:

Michael A. Dloogatch  
Joan F. Moore  
John C. Murphy

## CHS OFFICERS 1990

Ron Humbert, President  
Gery Herrmann, Vice-President  
Joan F. Moore, Treasurer  
Stephen Barten, Recording Secretary  
Kenneth S. Mierzwa, Corresponding Secretary  
Michael A. Dloogatch, Publications Secretary  
Ellin Beltz, Membership Secretary  
Jack Schoenfelder, Sergeant-At-Arms  
Phil Drajeske, Member-At-Large  
Karen Furnweger, Member-at-large  
Scott Henrie, Member-At-Large  
Michael Miller, Member-at-Large

The Chicago Herpetological Society is a non-profit organization incorporated under the laws of the state of Illinois. Its purposes are education, conservation and the advancement of herpetology. Meetings are announced in this publication, and are normally held at 7:30 P.M., the last Wednesday of each month at the Chicago Academy of Sciences, 2001 N. Clark Street, Chicago, IL 60614.

Membership in the CHS includes a subscription to the Bulletin. Annual dues are: Individual Membership, \$17.50; Family Membership, \$20.00; Sustaining Membership, \$25.00; Contributing Membership, \$100.00; Institutional Membership, \$30.00. Remittance must be made in U.S. funds. Subscribers outside the U.S. must add \$12.00 for postage. Membership inquiries and address changes should be sent to: Chicago Herpetological Society, Membership Secretary, 2001 N. Clark Street, Chicago, IL 60614. Publications are sent to U.S. members via third class bulk mail; the post office does not forward such mail, even if a special request is made to forward magazines.

Manuscripts should be submitted in duplicate, typewritten and double spaced. Alternatively, submission of manuscripts in the form of IBM PC-compatible or Macintosh format diskettes is encouraged. Manuscripts and letters concerning editorial business should be sent to: Chicago Herpetological Society, Publications Secretary, 2001 N. Clark Street, Chicago, IL 60614. Back issues are limited but are available from the Publications Secretary for \$2.50 per issue.

The BULLETIN of the Chicago Herpetological Society (ISSN 0009-3464) is published monthly by the Chicago Herpetological Society. Copyright 1989.